

Humanities Knowledge Organiser

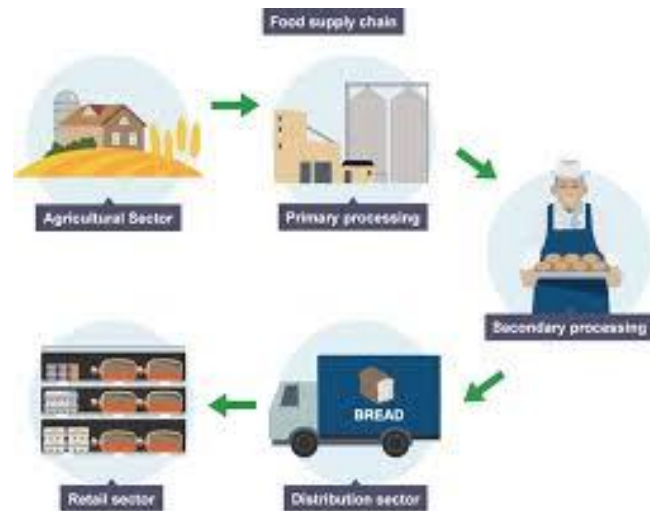
Year: 6 Term: 3

Trade & Economics – Where does our food come from?

Prior knowledge/key knowledge

Year 5 prior knowledge

Understand geographical similarities and differences through the study of human and physical geography of UK and a region within North/South America



Food Miles



Vocabulary

carbon footprint	A carbon footprint is a measure of the total amount of greenhouses gases that are released as a result of our actions.
A cooperative	A cooperative is a business or group that is run by the people who work for it.
distributing	Delivering something out to where it is needed.
emission	An emission is something that is released into the world. An example is the release of carbon dioxide when we breathe out.
food miles	Food miles measure the distance between where a food is grown or made to where it is eaten.
food production	The process of turning raw materials into food that we can eat.
intensive agriculture	Intensive agriculture is farming that uses more machines, workers and chemicals so that as many crops or animals as possible can be farmed on the space available.
imported	Brought in from another country.
greenhouse gases	These are gases in Earth's atmosphere that trap heat. Carbon dioxide and methane are both examples of greenhouse gases.
pesticides	Pesticides are substances that are added to soil or sprayed on plants to protect the plants from pests such as insects.
processing	Making a change to a food's natural state.
retailers	People and businesses that sell goods.
supply chain	A supply chain is every step a product goes through to be made and delivered to the customer.



Key skills/ investigative focus

Describe and understand key aspects of human geography, including: types of settlement and land use, economic activity including trade links, and the distribution of natural resources including energy, food, minerals and water

Big Questions/ Challenging Perceptions

What is a potential positive/negative impact of modern food processing methods?

What are the consequences of food miles?