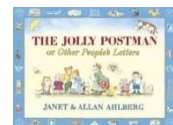
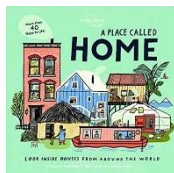
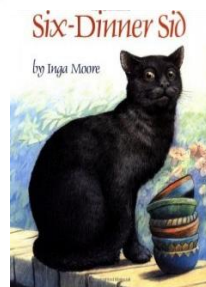


Term 1: From Thame and Beyond

We are kind
We do our best
We are a team

We will be learning all about ourselves and our special class rules. We will learn about where we live in Thame and the different houses we all live in. We will then move onto learning about countries and cultures which link to our families in our class.

Books we may look at...



Key vocabulary:

Family: a group of people who are related to each other.

House: a building in which a family or animal lives.

Town: a place where people live that is bigger than a village but smaller than a city.

